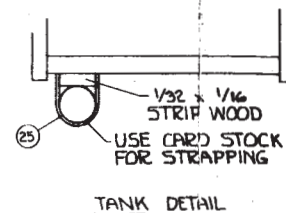
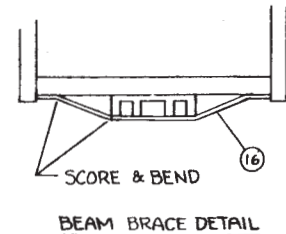
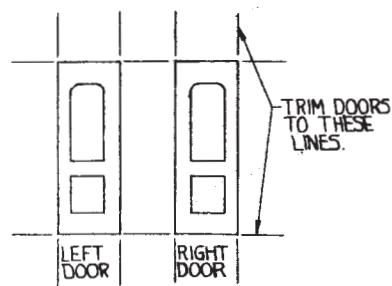
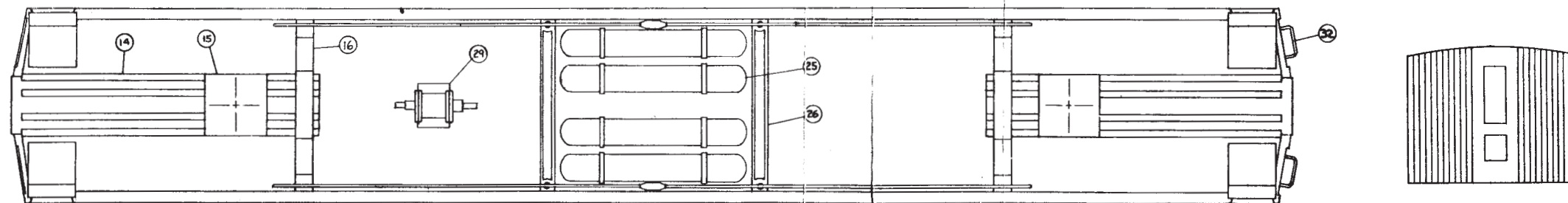
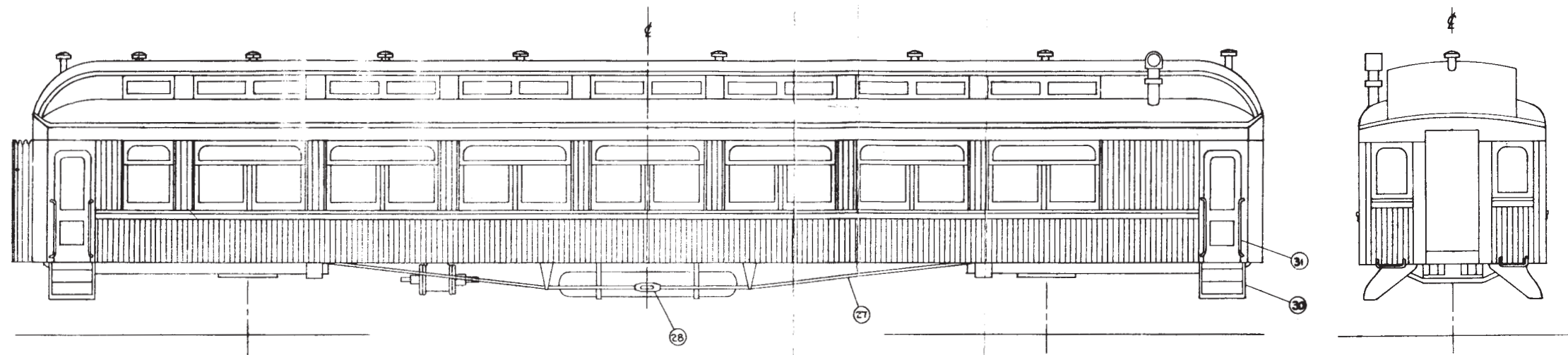


1905 CLOSED VESTIBULE WOOD COACH



La Belle Woodworking Company
Manufacturers of Model Railroad Kits

P. O. BOX 22

OCONOMOWOC, WISCONSIN

This is a basic kit of a 1905 closed vestibule coach. It can be lettered for almost any road and still be correct. It has unlimited possibilities for super detailing.

It is not a "Quickie Kit" and therefore it is suggested that the isometric and plan drawings be studied thoroughly, also that parts be sorted and be noted as to where they are intended to be used.

It is suggested that assembly be followed by the numbers in the instructions which correspond with the numbers on the isometric drawing and plan drawing.

These are the sub-sides (1).

Cut 16 large window posts (2) with offset on back to fit between bottom of letter board and top of belt rail. Use scribed siding (5) as template to obtain correct length, keeping offsets in line when cutting.

Cut paper-thin piece of scribed stock (3), furnished, to fit on small window posts. Separate to form 14 pieces as shown.

Cut out and discard center portion of part (2) on scribe marks. The two pieces are used for the window posts (4) for each end window on the sub-side. Repeat for other side.

Cement scribed siding (5) with offset on back to fit between window posts (4) and end of sub-side.

Cement scribed siding (6) below belt rail. Trim flush with ends of sub-side.

Slightly round vestibule door headers (7) to match door posts (23) and (24). Cut to fit and cement in place as shown.

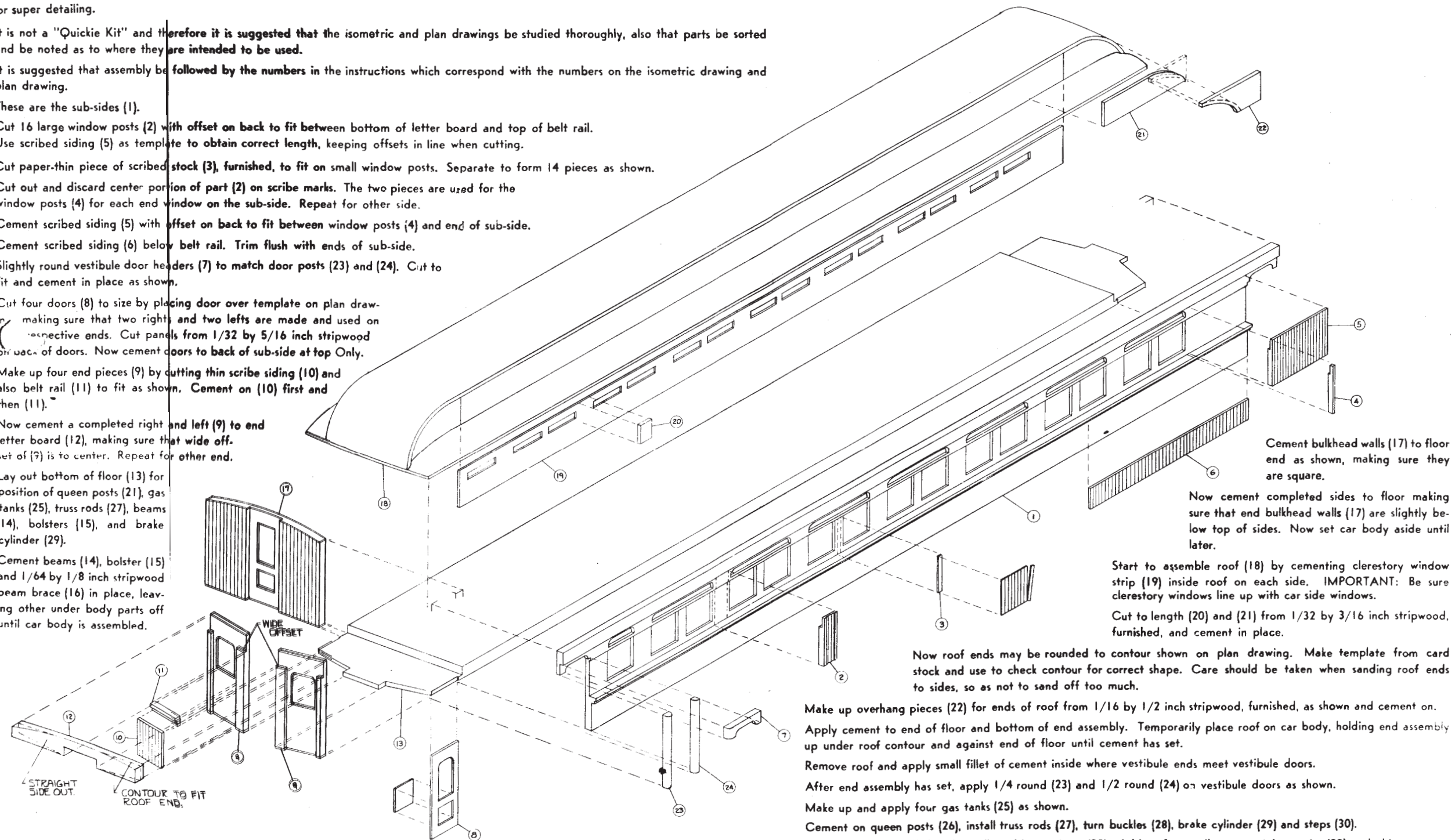
Cut four doors (8) to size by placing door over template on plan drawing, making sure that two rights and two lefts are made and used on respective ends. Cut panels from 1/32 by 5/16 inch stripwood or back of doors. Now cement doors to back of sub-side at top only.

Make up four end pieces (9) by cutting thin scribe siding (10) and also belt rail (11) to fit as shown. Cement on (10) first and then (11).

Now cement a completed right and left (9) to end letter board (12), making sure that wide offset of (9) is to center. Repeat for other end.

Lay out bottom of floor (13) for position of queen posts (21), gas tanks (25), truss rods (27), beams (14), bolsters (15), and brake cylinder (29).

Cement beams (14), bolster (15) and 1/64 by 1/8 inch stripwood beam brace (16) in place, leaving other under body parts off until car body is assembled.



Cement bulkhead walls (17) to floor end as shown, making sure they are square.

Now cement completed sides to floor making sure that end bulkhead walls (17) are slightly below top of sides. Now set car body aside until later.

Start to assemble roof (18) by cementing clerestory window strip (19) inside roof on each side. IMPORTANT: Be sure clerestory windows line up with car side windows.

Cut to length (20) and (21) from 1/32 by 3/16 inch stripwood, furnished, and cement in place.

Now roof ends may be rounded to contour shown on plan drawing. Make template from card stock and use to check contour for correct shape. Care should be taken when sanding roof ends to sides, so as not to sand off too much.

Make up overhang pieces (22) for ends of roof from 1/16 by 1/2 inch stripwood, furnished, as shown and cement on.

Apply cement to end of floor and bottom of end assembly. Temporarily place roof on car body, holding end assembly up under roof contour and against end of floor until cement has set.

Remove roof and apply small fillet of cement inside where vestibule ends meet vestibule doors.

After end assembly has set, apply 1/4 round (23) and 1/2 round (24) on vestibule doors as shown.

Make up and apply four gas tanks (25) as shown.

Cement on queen posts (26), install truss rods (27), turn buckles (28), brake cylinder (29) and steps (30).

Make up hand rails (31) and install. Add grab irons (32). Add roof vents (brass escutcheon pins (29) and chimney.

Car is ready for painting.

After painting, add colored acetate for clerestory windows in roof and upper windows on sides. Clear acetate for lower windows. Don't forget to frost lavatory glass by sanding lightly on backside with fine sandpaper.

Roof may now be cemented in place. Attach diaphragms.